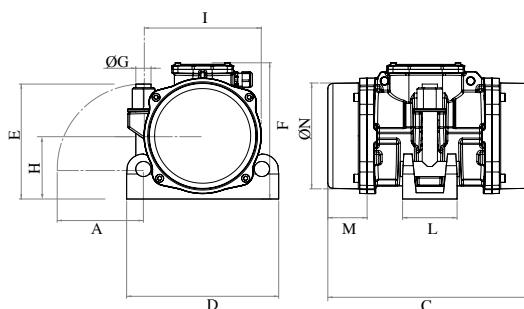




MVE 2000/6N-HC-50A0 [CN40200050A0AA0000]

3 PH - 2 poles - 6000 RPM - 42 V - 200 Hz

Working moment (Kg*cm)	Unbalance (Kg*cm)	Centrifugal force (Kg)	Nominal voltage (V)	Input power (kW)	Current (A)	Power factor	Ia/In
9,48	4,74	1.907	42	1,6	Δ 24	0,77	



*Technical drawings are illustrative purposes only, please refer to 2D/3D drawings available on "FINDER" app.
Contact us for more information.

OVERALL DIMENSIONS (mm)

Weight (Kg)	G	Holes number	A	C	D	E	F	H	I	L	M	N
28,6	25	1	136	321	240	184	218	102	185	86	62	170

TECHNICAL FEATURES

Type of grease	Greased for life	Screw	Washer	Clamping torque (Nm)	Cable type	Cable gland
KLUBER ISOFLEX NB52	Yes	M24	25 x 44 mm	360	3x4 80°C	M25 120°C

BEARINGS LIFE HOURS

Bearing model	Type	100% C.F	80% C.F	50% C.F
NJ 306		/	/	/

CERTIFICATION

Atex II 3D Ex tc IIIc Tx IP66 [Tx Size 10-30:100°C - Tx Size 40-91:135°C] T.Amb -20/+40°C	
---	--

REV.6-03/06/2021

Dimension with coarse degree of accuracy related to UNI 22768/1 Rights reserved to modify technical specifications.



PO Box 111, Charlestown NSW 2290
Unit 7/8 Kilcoy Drive, Tomago NSW 2322
P: 1300 026 011 | E: graham@bulkquip.com.au
www.bulkquip.com.au